

# JELLING MUSIKFESTIVAL 2023 – TELT SCENE



Light Specifications

*Jelling Musikfestival*

# JELLING MUSIKFESTIVAL 2023 – TELT SCENE

## Light Specifications

### Intelligent:

- 18 Pcs. Robe Robin Pointe
- 18 Pcs. Chauvet Rogue R1 Wash
- 30 Pcs. Martin Atomic Dot WRM

### Generics:

- 12 Pcs. Desisti 1KW
- 02 Pcs. Look Unique Hazer 2.1

### Truss:

- 03 Pcs. House LX
- 01 Pcs. Guest LX (MAX 50KG For Backdrop)

### Control:

- 01 Pcs. MA Lightning Grandma2 Lite
- 02 Pcs. Guest DMX Lines FOH – Stage
- 02 Pcs. Guest CAT5 FOH – Stage

### Jelling Contact:

Production Manager: Morten Færk

Mail: productionmanager@jellingmusikfestival.dk

Phone: +4522366550

Stage Manager: Jacob Due Hansen

Mail: jadh@outlook.dk

Phone: +4529170249

### Nordic Rental Contact:

Production Manager: Anders Linnet

Mail: Anli@nordic.dk

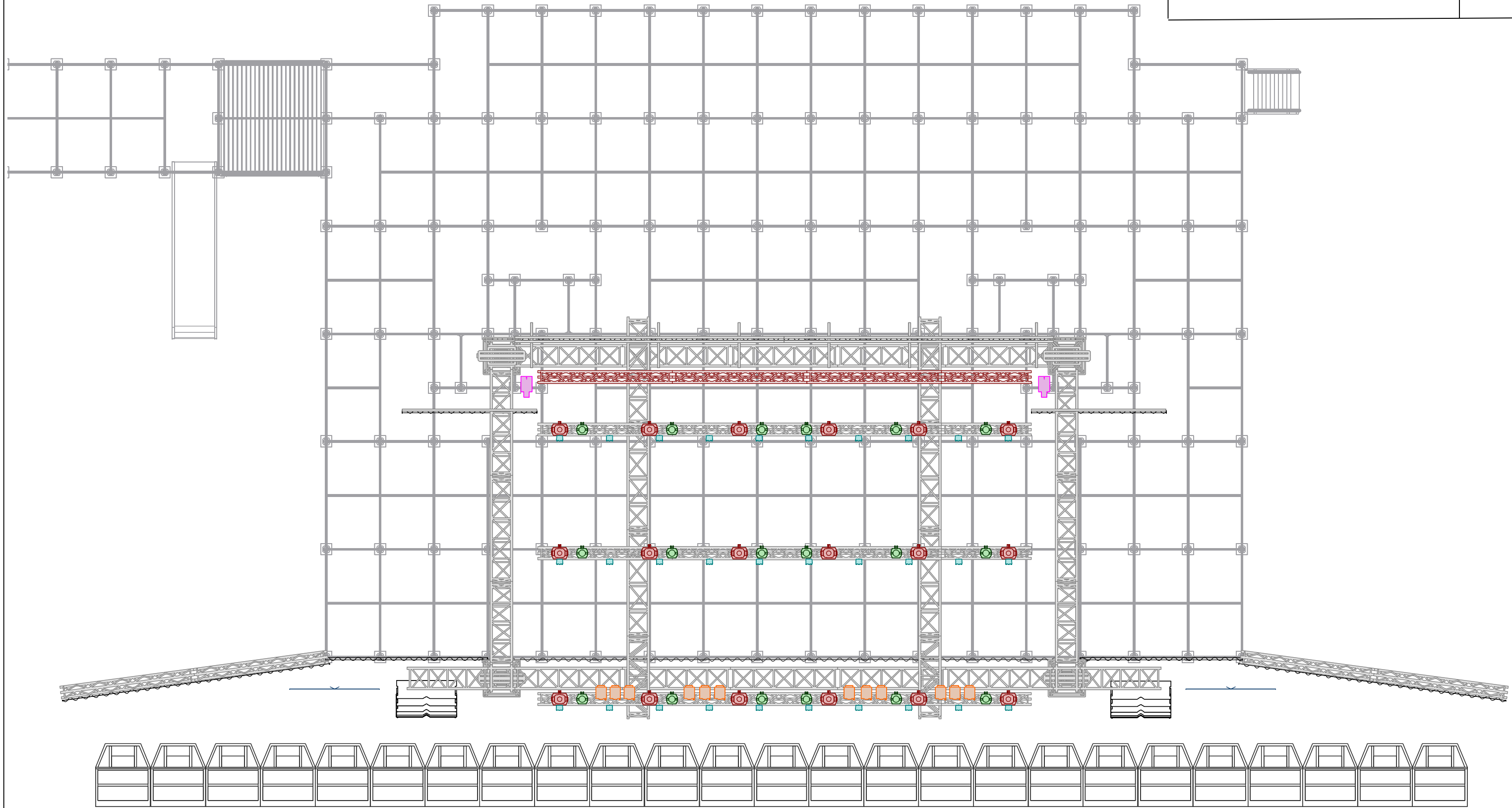
Phone: +4527102639

Light Manager: Mikkel Haagenen

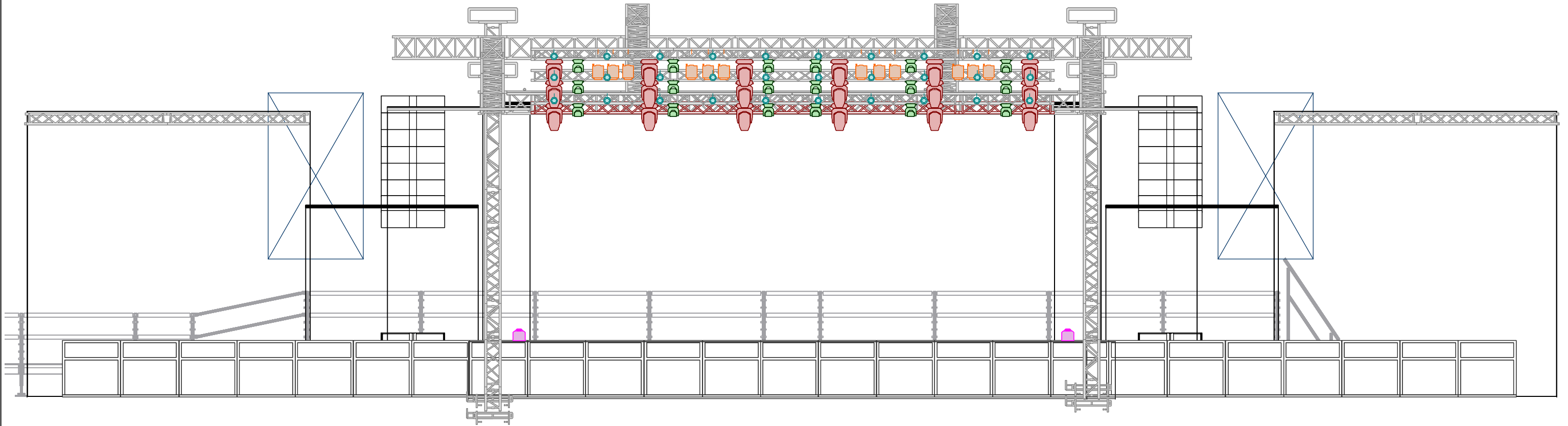
Mail: miha@nordic.dk

Phone: +4527102649

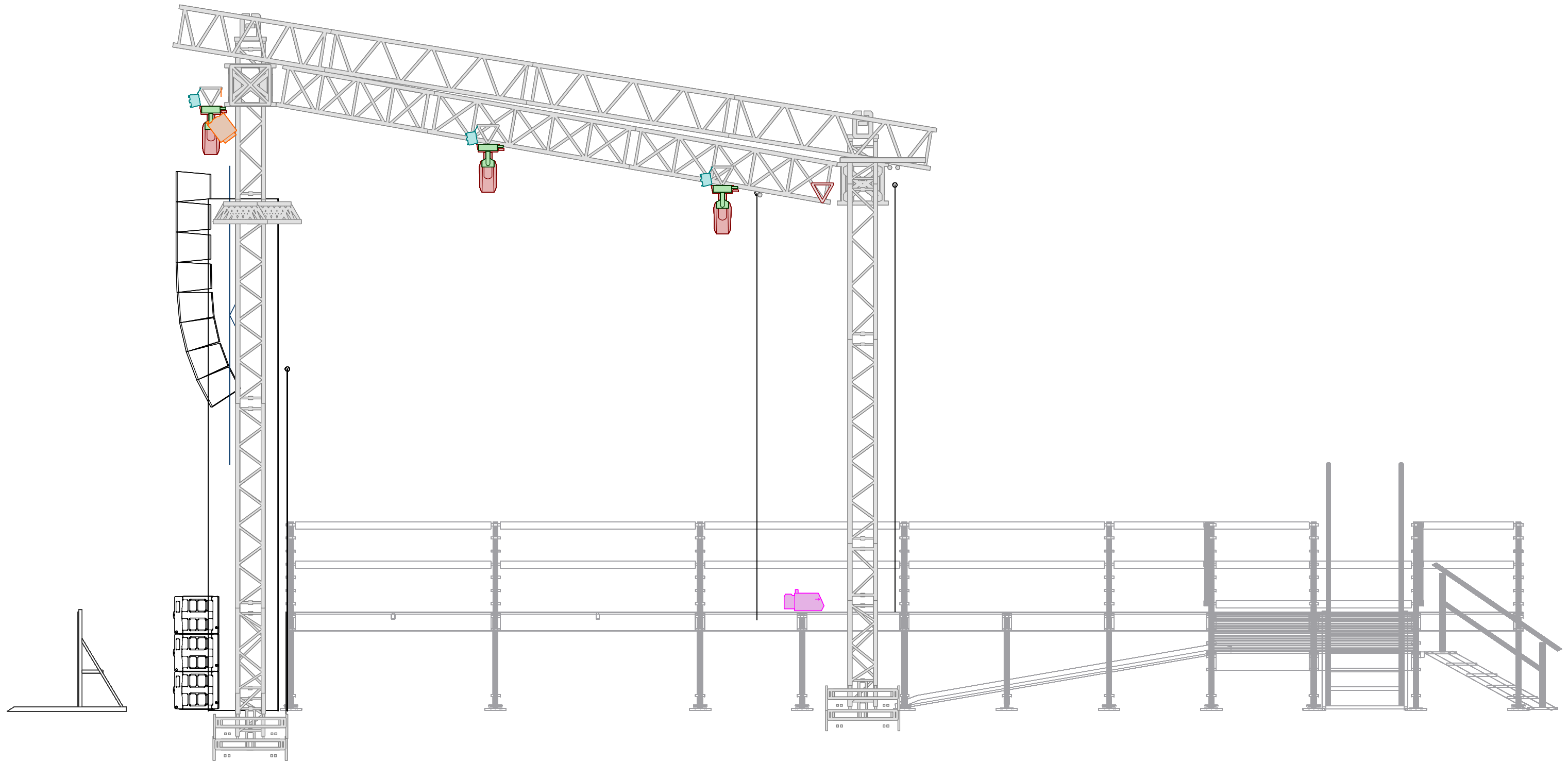




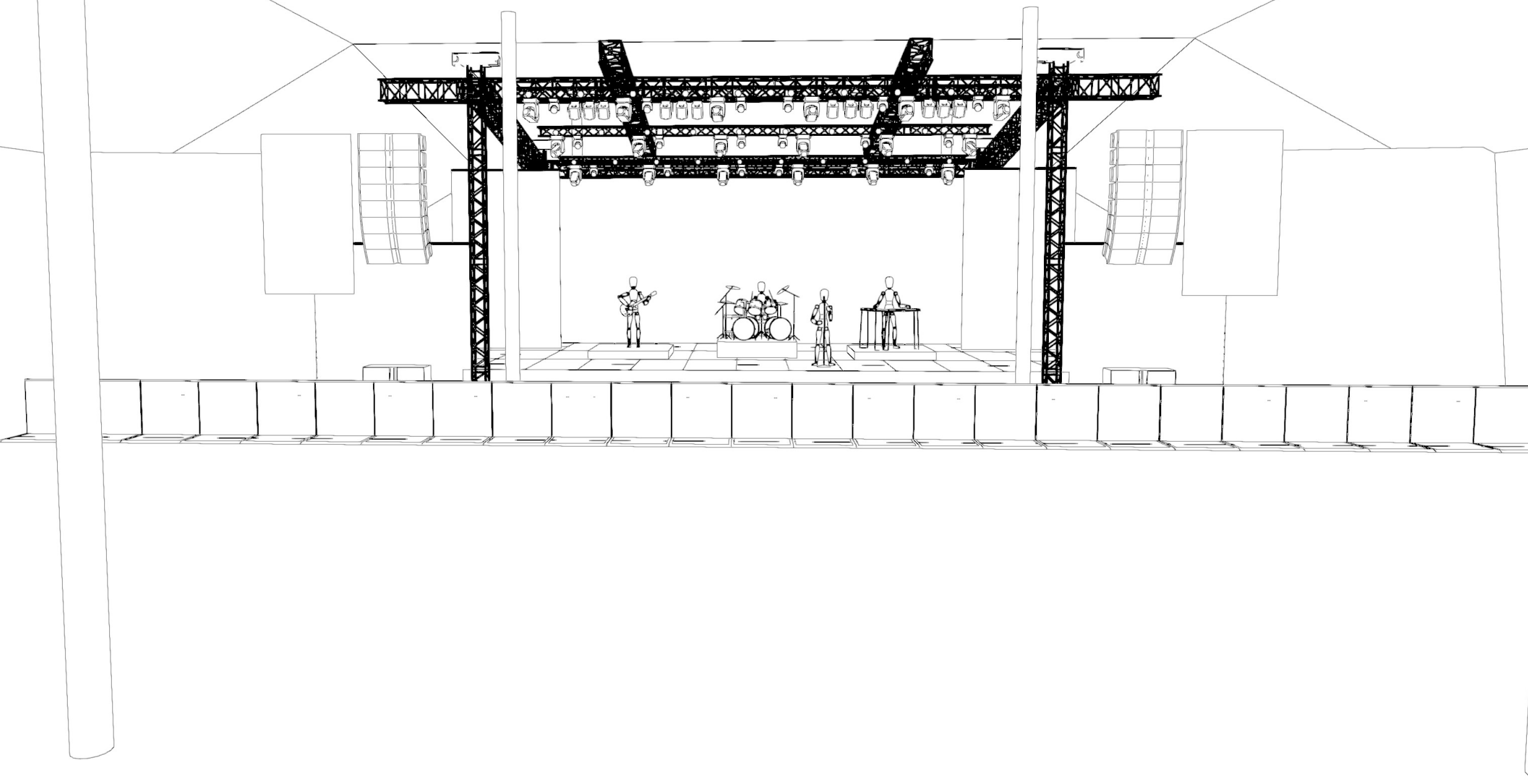
LEGEND					NOTES	VENUE	DATE	PROJECT	DESIGN
Symbol	Name	Mode	Count	# Char...					
	Robin Pointe	1	18	24	House Desk GMA2 Lite 2 X CAT5 For Geust 2 X DMX For Geust	JELLING	MAJ 23	TELT SCENEN	Nordic Rentals
	De Sisti Leonardo 1kW Pole Op		12	1					
	Rogue R1 Wash	15	18	15	RED TRUSS MAX LOAD 50KG ONLY FOR GEUST BACKDROP	MANAGER - CONTACT Anders Linnet +4527102639 anli@nordic.dk	SCALE NTS		
	Unique 2.1 Hazer		2	2					
	VDO Atomic Dot WRM	Basic	30	19			VERSION V 1.0		



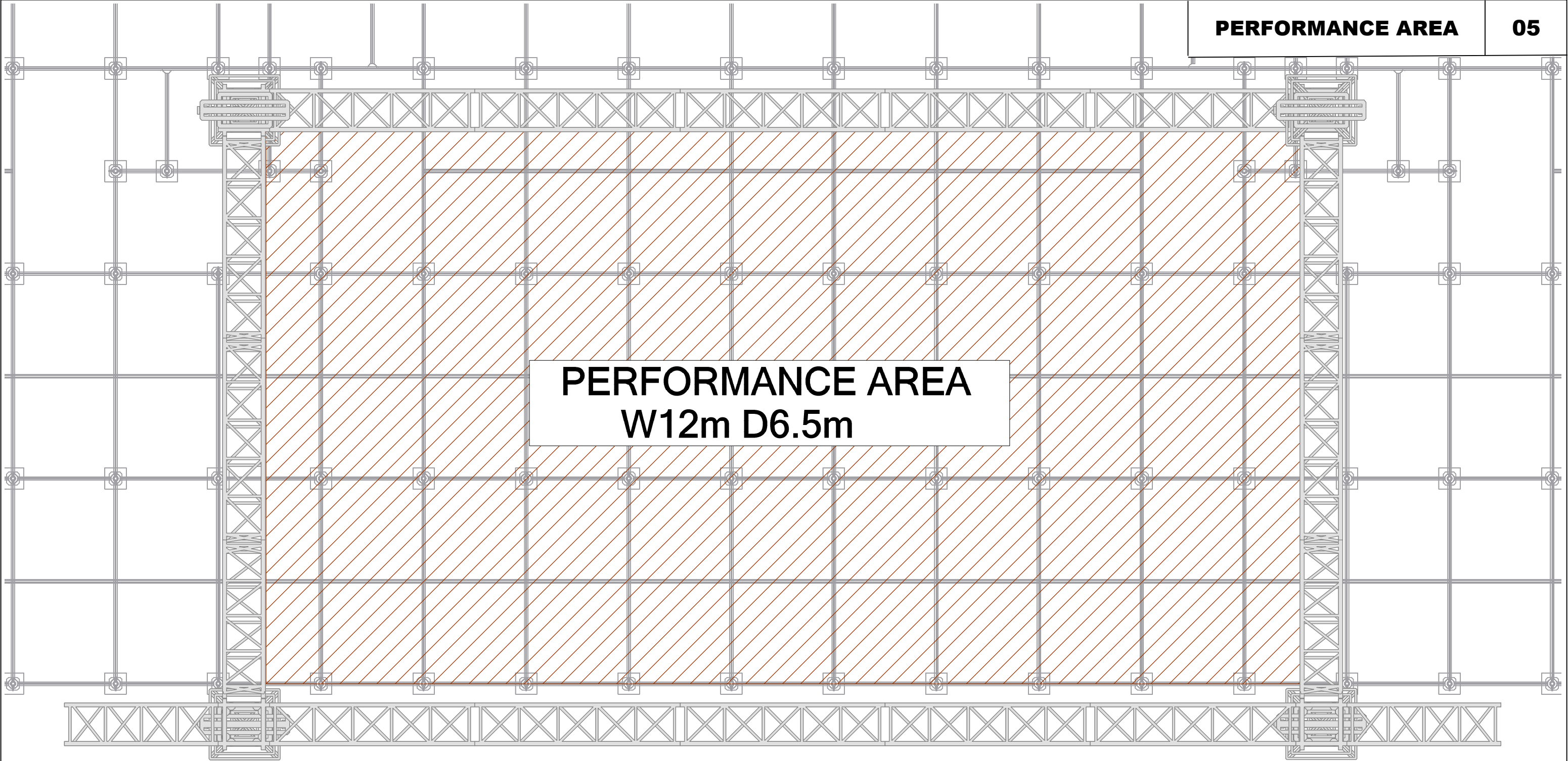
LEGEND						NOTES	VENUE	DATE	PROJECT	DESIGN
	Robin Pointe	1	18	24		House Desk GMA2 Lite 2 X CAT5 For Geust 2 X DMX For Geust	<b>JELLING</b>	MAJ 23	TEL T SCENEN	Nordic Rentals
	Rogue R1 Wash	15	18	15		RED TRUSS MAX LOAD 50KG ONLY FOR GEUST BACKDROP	MANAGER - CONTACT Anders Linnet +4527102639 anli@nordic.dk	SCALE NTS		
	VDO Atomic Dot WRM	Basic	30	19			VERSION V 1.0			
	De Sisti Leonardo 1kW Pole Op		12	1						
	Unique 2.1 Hazer		2	2						



LEGEND					NOTES	VENUE	DATE	PROJECT	DESIGN
Symbol	Name	Mode	Count	# Characters					
	Robin Pointe	1	18	24	De Sisti Leonardo 1kW Pole Op	JELLING	MAJ 23	TELT SCENEN	Nordic Rentals
	Rogue R1 Wash	15	18	15	Unique 2.1 Hazer	MANAGER - CONTACT Anders Linnet +4527102639 anli@nordic.dk	SCALE NTS	<i>Jelling Musikfestival</i>	
	VDO Atomic Dot WRM	Basic	30	19	RED TRUSS MAX LOAD 50KG ONLY FOR GEUST BACKDROP	VERSION V 1.0			

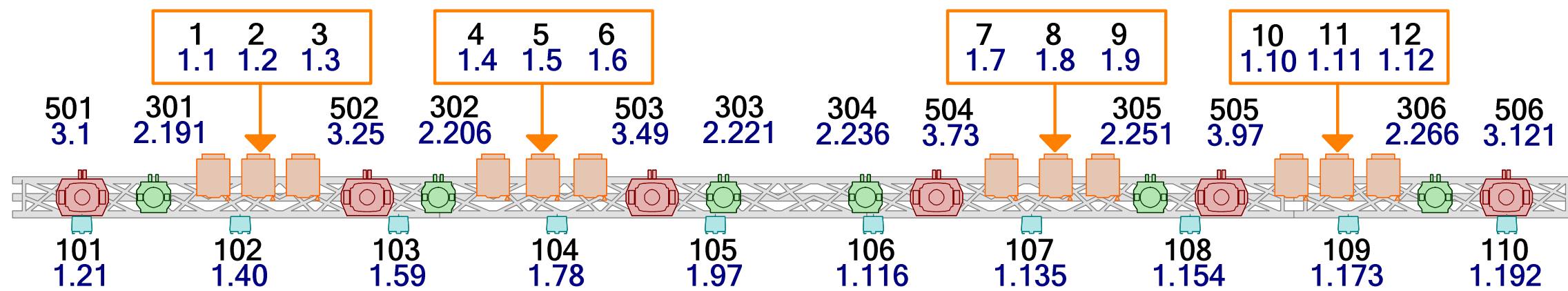
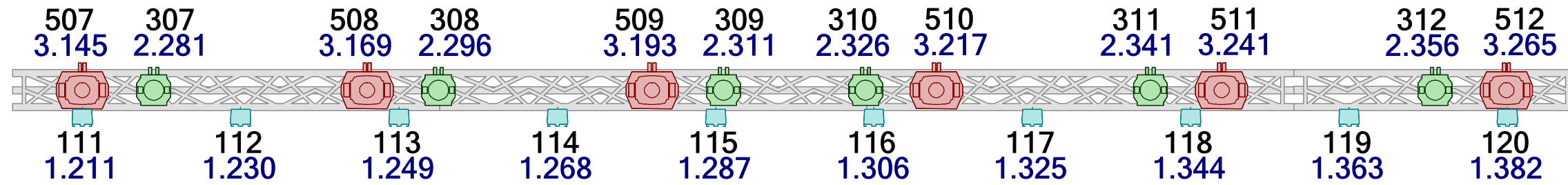
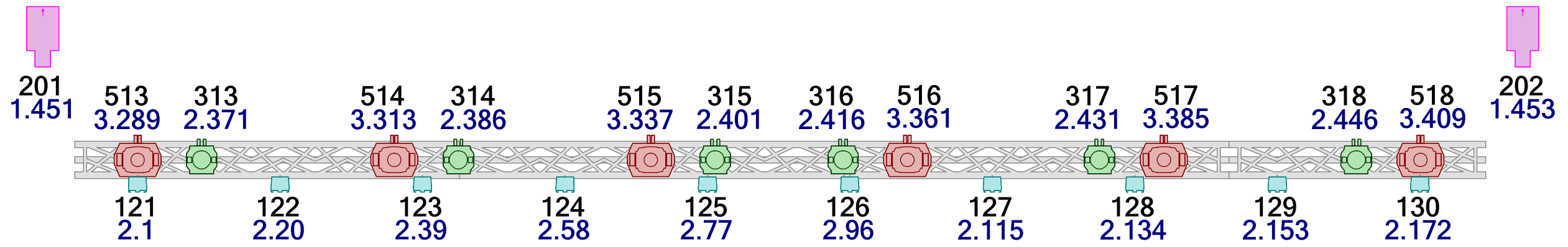


LEGEND					NOTES	VENUE	DATE	PROJECT	DESIGN
	Robin Pointe	1	18	24	House Desk GMA2 Lite 2 X CAT5 For Geust 2 X DMX For Geust	<b>JELLING</b>	MAJ 23	TELT SCENEN	Nordic Rentals
	Rogue R1 Wash	15	18	15	RED TRUSS MAX LOAD 50KG ONLY FOR GEUST BACKDROP	MANAGER - CONTACT Anders Linnet +4527102639 anli@nordic.dk	SCALE NTS	<i>Jelling Musikfestival</i>	
	VDO Atomic Dot WRM	Basic	30	19			VERSION V 1.0		
	De Sisti Leonardo 1kW Pole Op	12	1						
	Unique 2.1 Hazer	2	2						



**PERFORMANCE AREA**  
**W12m D6.5m**

LEGEND					NOTES	VENUE	DATE	PROJECT	DESIGN
Symbol	Name	Mode	Count	# Char...		<b>JELLING</b>	MAJ 23	TELT SCENEN	Nordic Rentals
	Robin Pointe	1	18	24	De Sisti Leonardo 1kW Pole Op	MANAGER - CONTACT Anders Linnet +4527102639 anli@nordic.dk	SCALE NTS		
	Rogue R1 Wash	15	18	15	Unique 2.1 Hazer	RED TRUSS MAX LOAD 50KG ONLY FOR GEUST BACKDROP	VERSION V 1.0		
	VDO Atomic Dot WRM	Basic	30	19					



LEGEND

Symbol	Name	Mode	Count	# Channels
	Robin Pointe	1	18	24
	Rogue R1 Wash	15	18	15
	VDO Atomic Dot WRM	Basic	30	19

NOTES

House Desk GMA2 Lite  
 2 X CAT5 For Geust  
 2 X DMX For Geust  
  
 RED TRUSS MAX LOAD 50KG  
 ONLY FOR GEUST BACKDROP

VENUE

JELLING

MANAGER - CONTACT  
 Anders Linnet  
 +4527102639  
 anli@nordic.dk

DATE

MAJ 23

SCALE

NTS

VERSION

V 1.0

PROJECT

TELT SCENEN

*Jelling Musikfestival*

DESIGN

Nordic Rentals





# Patch By Unit



Unit	Patch	Type	Mode	# Data
1	1.1	De Sisti Leonardo 1kW Pole Op	N/A	1
2	1.2	De Sisti Leonardo 1kW Pole Op	N/A	1
3	1.3	De Sisti Leonardo 1kW Pole Op	N/A	1
4	1.4	De Sisti Leonardo 1kW Pole Op	N/A	1
5	1.5	De Sisti Leonardo 1kW Pole Op	N/A	1
6	1.6	De Sisti Leonardo 1kW Pole Op	N/A	1
7	1.7	De Sisti Leonardo 1kW Pole Op	N/A	1
8	1.8	De Sisti Leonardo 1kW Pole Op	N/A	1
9	1.9	De Sisti Leonardo 1kW Pole Op	N/A	1
10	1.10	De Sisti Leonardo 1kW Pole Op	N/A	1
11	1.11	De Sisti Leonardo 1kW Pole Op	N/A	1
12	1.12	De Sisti Leonardo 1kW Pole Op	N/A	1
101	1.21	VDO Atomic Dot WRM	Basic	19
102	1.40	VDO Atomic Dot WRM	Basic	19
103	1.59	VDO Atomic Dot WRM	Basic	19
104	1.78	VDO Atomic Dot WRM	Basic	19
105	1.97	VDO Atomic Dot WRM	Basic	19
106	1.116	VDO Atomic Dot WRM	Basic	19
107	1.135	VDO Atomic Dot WRM	Basic	19
108	1.154	VDO Atomic Dot WRM	Basic	19
109	1.173	VDO Atomic Dot WRM	Basic	19
110	1.192	VDO Atomic Dot WRM	Basic	19
111	1.211	VDO Atomic Dot WRM	Basic	19
112	1.230	VDO Atomic Dot WRM	Basic	19
113	1.249	VDO Atomic Dot WRM	Basic	19
114	1.268	VDO Atomic Dot WRM	Basic	19
115	1.287	VDO Atomic Dot WRM	Basic	19
116	1.306	VDO Atomic Dot WRM	Basic	19
117	1.325	VDO Atomic Dot WRM	Basic	19
118	1.344	VDO Atomic Dot WRM	Basic	19
119	1.363	VDO Atomic Dot WRM	Basic	19
120	1.382	VDO Atomic Dot WRM	Basic	19
121	2.1	VDO Atomic Dot WRM	Basic	19
122	2.20	VDO Atomic Dot WRM	Basic	19
123	2.39	VDO Atomic Dot WRM	Basic	19
124	2.58	VDO Atomic Dot WRM	Basic	19
125	2.77	VDO Atomic Dot WRM	Basic	19
126	2.96	VDO Atomic Dot WRM	Basic	19
127	2.115	VDO Atomic Dot WRM	Basic	19
128	2.134	VDO Atomic Dot WRM	Basic	19
129	2.153	VDO Atomic Dot WRM	Basic	19
130	2.172	VDO Atomic Dot WRM	Basic	19
201	1.451	Unique 2.1 Hazer	N/A	2
202	1.453	Unique 2.1 Hazer	N/A	2
301	2.191	Rogue R1 Wash	15	15
302	2.206	Rogue R1 Wash	15	15
303	2.221	Rogue R1 Wash	15	15
304	2.236	Rogue R1 Wash	15	15
305	2.251	Rogue R1 Wash	15	15

# Patch By Unit



Unit	Patch	Type	Mode	# Data
306	2.266	Rogue R1 Wash	15	15
307	2.281	Rogue R1 Wash	15	15
308	2.296	Rogue R1 Wash	15	15
309	2.311	Rogue R1 Wash	15	15
310	2.326	Rogue R1 Wash	15	15
311	2.341	Rogue R1 Wash	15	15
312	2.356	Rogue R1 Wash	15	15
313	2.371	Rogue R1 Wash	15	15
314	2.386	Rogue R1 Wash	15	15
315	2.401	Rogue R1 Wash	15	15
316	2.416	Rogue R1 Wash	15	15
317	2.431	Rogue R1 Wash	15	15
318	2.446	Rogue R1 Wash	15	15
501	3.1	Robin Pointe	1	24
502	3.25	Robin Pointe	1	24
503	3.49	Robin Pointe	1	24
504	3.73	Robin Pointe	1	24
505	3.97	Robin Pointe	1	24
506	3.121	Robin Pointe	1	24
507	3.145	Robin Pointe	1	24
508	3.169	Robin Pointe	1	24
509	3.193	Robin Pointe	1	24
510	3.217	Robin Pointe	1	24
511	3.241	Robin Pointe	1	24
512	3.265	Robin Pointe	1	24
513	3.289	Robin Pointe	1	24
514	3.313	Robin Pointe	1	24
515	3.337	Robin Pointe	1	24
516	3.361	Robin Pointe	1	24
517	3.385	Robin Pointe	1	24
518	3.409	Robin Pointe	1	24